



# HIKVISION

## DS-2TS03-25UM/W

Handheld Observational Thermal Monocular



Hikvision DS-2TS03 handheld observational thermal monocular is equipped with a 384×288 infrared detector and a 1024×768 OLED display. It supports functions of observation, hot spot tracking, distance measurement, Wi-Fi hot spot, and so on. The high-sensitivity built-in thermal detector provides you with clear view even in total darkness.

### Key Features

- 384 × 288 resolution, high sensitivity detector
- DDE (Digital Detail Enhancement) technique
- 3D DNR, adaptive AGC (Automatic Gain Control)
- 1024 × 768 resolution 0.39-inch OLED display
- Built-in rechargeable Li-ion battery
- Up to five hours continuous running (with GPS function and Wi-Fi hot spot function off)
- Small in size and light in weight



[www.hikvision.com](http://www.hikvision.com)

## Application Scenarios

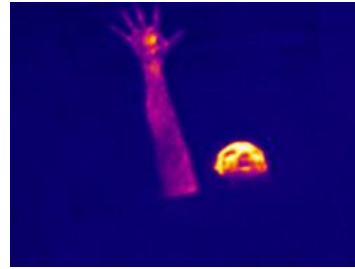
The monocular is mainly applied to scenarios such as patrolling, law enforcement, searching and rescuing, drug enforcement, anti-smuggling, criminal seizing, hiking, travel, and hunting, etc.,



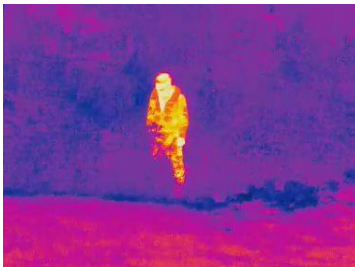
Security checking



Patrolling



Searching and rescuing



Criminal seizing



Avoid beasts



Hunting

## Functions

### Distance Measurement:

The device realizes distance measurement function after marking the top and bottom of target, and input the target height.

### Hot Spot Mark:

The device detects and marks the hot spot of highest temperature.

### Wi-Fi Hot Spot:

Device can capture snapshots, record videos, and set parameters via APP after being connected to your phone.

### GPS Function:

The device can be located with GPS system.

### Storage:

Built-in memory module supports video recording/snapshot capturing.

### Digital Zoom:

Device supports 2× digital zoom.

### LED light:

LED light supplement makes the device a torch in the wild field.

## Specifications

		Model	DS-2TS03-25UM/W
Parameter		Handheld Observational Thermal Monocular	
Thermal Module	Image sensor	Uncooled Focal Plane Arrays	
	Max. Resolution	384 × 288	
	Response waveband	8μm to 14μm	
	NETD	< 50mk (@25°C,F#=1.0)	
	Lens (focal length)	25mm	
	MRAD	0.68	
	Field of View	14.88° × 11.19°	
	F number	1.0	
Image Display	Monitor	0.39-inch, OLED, 1024 × 768	
	Pallets	Black hot White hot Red hot	
System	Hot Track	Support	
	WIFI	Support	
	Storage	Built-in memory module (16GB)	
	Digital Zoom	2×	
	LED Light Supplement	Support	
	Capture Snapshot	Support	
	Record Video	Support on-board video / image recording	
	GPS	Support	
Power Supply	Battery Type	Lithium Battery	
	Battery Operating Time	Up to five hours continuous running (with GPS function and Wi-Fi hot spot function off)	
	Battery Capacity Display	Support	
General	Power	5V DC/2A, 2W	
	Working Temperature	-30 °C to 55 °C (-22 °F to 131 °F)	
	Protection level	IP67	
	Drop Test Height	2 m (6.56 feet)	
	Dimension (L x W x H)	185 mm × 74 mm × 66 mm (7.28 " × 2.91 " × 2.60 ")	
	Weight	460 g (0.20 lb)	

## Wide Range Coverage for Different Specifications

**Note:** The table below is only for reference, the performance varies from model to model, and the specific data is based on 17 μm pixel space-between.

Lens (focal length)	10mm	15mm	25mm	35mm	50mm	75mm
Detection range (Vehicles)	902m	1353m	2255m	3157m	4510m	6765m
Detection range (Humans)	294m	441m	735m	1029m	1471m	2206m
Recognition range (Vehicles)	225m	338m	564m	789m	1127m	1691m
Recognition range (Humans)	74m	110m	184m	257m	368m	551m
Identification range (Vehicles)	113m	169m	282m	395m	564m	846m
Identification range (Humans)	37m	55m	92m	129m	184m	276m

## Order Models

DS-2TS03-25UM/W

## Dimensions

