

Long-Distance PTZ Camera **FarCam-2000**









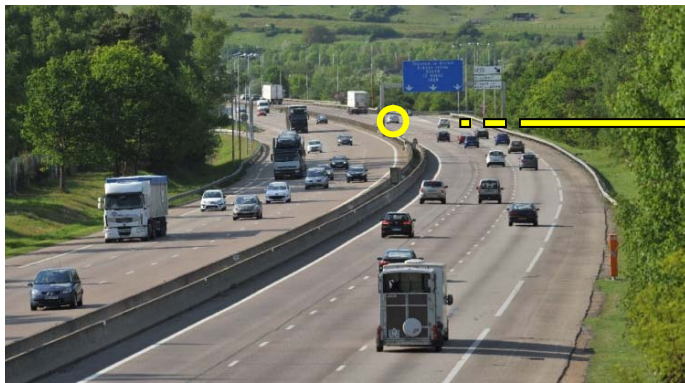
Autonomous weatherproof system intended for long-distance surveillance in harsh conditions. Easy to carry and quick to deploy, FarCam 2000 offers great image quality and high nocturnal sensitivity. Thanks to the very high resolution and ultra long focal zoom lens, it meets all the needs of our most demanding clients.

- Housing and turret quickly separable by thumbscrews
- High quality optical Zoom magnification X60
- 2 ranges of focal lengths from 16.7 to 1000 m and 33.4 to 2000 mm
- 2 m horizontal Field of View at a distance of 1 Km
- 4 K HD Resolution up to 4000 x 3000 pixels
- Electronic image stabilizer and Defog processor
- 2-axis variable speed Turret proportional to zoom
- **Several options available:**
HD recorder; 3G/4G transmitter; Long distance wireless link, Other outputs : HDMI or HD-SDI.

Specifications	IP Model : FarCam-2000/IP
Progressive Scan sensor	PS CMOS 2/3" 12 Megapixels 4000 x 300 pixels maxi Settings : 12M(4000×3000) / 8M(3840×2160) / 1080P(1920×1080) 720P(1280 ×720) / D1(704×576) / CIF(352×288)
Frame rate	Main stream : 12M (15fps) /8M to 1080p (25/30fps) Sub stream : D1/CIF(50/60fps) - Third stream : 1080P/720P/D1(50/60fps)
Bit rate	H.264: 32K ~ 96Mbps
Day & Night	Auto (ICR) / Color / B/W
Sensitivity	Color: 0.01Lux/F1.2, B/W: 0.001Lux/F1.2 with DSS integration
Dynamic processing	Image Stabilizer, Defog, BLC, HS-BLC, WDR, ATW, SSSR, SSSNR, motion detection, intelligent features as disappearance of objects, masking, mirror, etc.
HD video record	Built-in in micro memory card Micro SD, Max 128G
Video compression	H.264(MPEG-4 Part 10/AVC), Motion JPEG (dual streaming)
Protocols	IPv4/IPv6, HTTP, HTTPS, SSL, TCP/IP, UDP, UPnP, ICMP, IGMP, SNMP, RTSP, RTP, SMTP, NTP, DHCP, DNS, PPPOE, DDNS, FTP, IP Filter, QoS, Bonjour
Two-way Audio (Option)	Mic. / Line In, Line Out, Mic. integrated
Access	Smart Phone, iPhone, iPad, Android, Windows Phone, PC browser, CMS software
Zoom lens	Focal range 1: 16.7 to 1000 mm F/3.5-16 Range 2: 33.4 to 2000 mm F / 7-32
Iris	Diaphragm controlled by the camera (DC)
Remotely Switchable filters	Anti-Visible Filter - Filters attenuators ND8 and ND64
Rotation speeds	Horizontal (Pan) and Vertical (Tilt) : variable from 0° to 10°/sec - 64 Presets
Dimensions	Housing with camera : 670 x 188 x 242 mm / weight 9,5 Kg Turret : 125 x 170 x 225 mm / weight 9,80 kg
Cables and Connectors	Depending on versions, please consult us, or upon customer's specifications
Power supply system	+12VDC (external battery or AC power supply) - 24 VDC (optional)
Consumption	Standby (excluding 4G, radio or Wireless) : 500 mA / 12 VDC Zoom and P&T motors : + 500 mA
Sealing	IP66
Temperatures	In use : -10°C à +55°C Storage : -25°C + 65°C
Supplied bracket	Professional telescopic tripod (Tripod-110)



OPTIONS	
	3G/4G Transmitter integrated into the camera housing for live viewing and PTZ control from a remote PC or SmartPhone / iPhone. 3G / 4G Antenna removable at the rear of the camera housing
	Integrated WiFi access point to viewing and controlling PTZ by PC or Smart-Phone / iPhone within a radius of around tens of meters
	Digital Radio Transmitter OFDM long distance (up to 25 km in ideal conditions with high gain antennas). Transmitter can be built in the camera housing, requires a Radio Transceiver close to the control PC
	Mini 3D joystick for local PTZ controls by wired connexion to XLR4 connector at the rear of the camera housing (in addition of other remote controls)
	Tactical Display Case : PTZ controls, 4K to Full HD recording, LCD display Removable USB disk readable on PC PTZ control by wireless mouse or optional Joystick Built-in battery or external +12 VDC power supply 3G/4G (LTE) transmitter
	Li-Fe battery in external mini Pelicase 12 VDC/40 to 160 AH in outdoor case



Long view



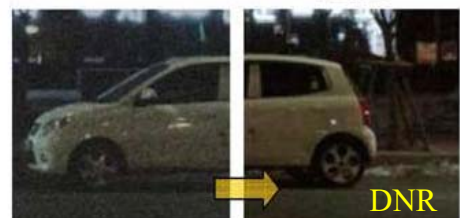
Fog Panetrate Mode OFF



Fog Panetrate Mode ON



DWDR



DNR