

**Model**  
**PC 2005**

**COLOUR**

**CCD BOARD CAMERA**

**D-mount**



**Model : PC 2005 (PAL)**

- 22 x 26 mm single board camera
- 1/4 " CCD Colour DSP Camera
- Low Voltage (5VDC)
- Extremely Compact
- I<sup>2</sup>C control via Software:
- High Resolution

## Specifications

**Image sensor :**  
**Effective pixels :**  
**TV system :**

1/4 " Inter-line type colour CCD image sensor  
752 (H) x 582 (V) – 437.664 pixels  
PAL

**Video Output :**  
**Scanning system :**  
**Synchronisation :**  
**Horizontal resolution :**  
**Min. Illumination :**  
**S/N ratio :**

VBS 1,0 Vpp sync. Negative 75 ohms unbalanced  
2 : 1 interlace  
Internal (Quartz)  
more than 450 TV lines  
1.0 Lux max. (Output level 50% / AGC ON / F1,4)  
better than 45 dB (AGC Off)

**Electronic Iris :**  
**White Balance :**  
**Gamma :**

1/50 sec.      1/100.000 sec.  
Auto White Balance  
0,45

**Power supply :**  
**Current consumption :**  
**Operation :**  
**Storage :**

DC +5 V  
160 mA (at DC 5 V)  
-5 °C to +45 °C      max. 80% humidity  
-20 °C to +60 °C      max. 90% humidity

**Built-in lens :**  
**Lens Options :**

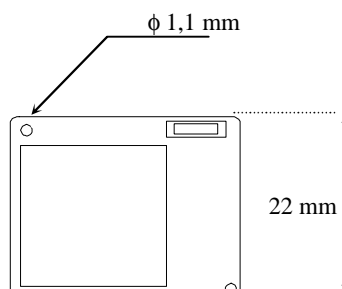
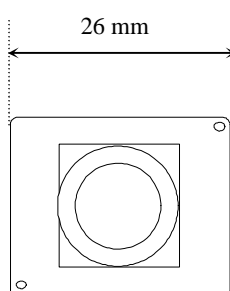
f=3,0mm F2,8    D-mount lens  
f=1,9mm ; f=4,0mm, f=6,0mm ; f=8,0mm ; f=12,0mm

**Weight :**

**Pin hole:** f=3,7mm  
10 g. without lens

## Dimensions

26 x 22 mm



**Connector**  
1 - +5VDC  
2 - GND  
3 - Video Out  
4 - GND  
5 - factory setting  
6 - factory setting