



# H8 SUPER Housing Series

LIGHTWEIGHT ■ TOTAL WEATHER PROTECTION ■ EASY ACCESS & OPTION TO CHANGE FRONT LENS WINDOW

## PRODUCT DESCRIPTION

The H8 SUPER is an innovative weatherproof housing for indoor/outdoor installations. Made of an injection-molded ABS/Nylon resin, it is a Salley secret that the housing is completely resistant to shock and impact and it is, more importantly, totally weatherproof in hot and cold climates. The special material guarantees complete insulation from extreme temperature and doesn't require an internal heating or cooling unit. The H8 SUPER also features an innovative opening mechanism to allow easy interior access and has two mounting options – regular B9 bracket or the tough AB aluminium bracket.



**NO HEATING REQUIRED**



**NO COOLING REQUIRED**

## PRODUCT OPTIONS

Colours Available: RAL9002 (Off white)  
Black

The following colours are available for a minimum order quantity of 250 pieces – Gun Metal, Camouflage, Green, Yellow

CCD Camera quoted upon request

Different available brackets

H8 Super provides the option to change the front lens/window easily without damaging the housing

## APPLICATIONS

Extreme environmental conditions

Indoor/outdoor areas

Wash down applications



Easy installation – Easy maintenance

# H8 SUPER - Housing Series

LIGHTWEIGHT ■ TOTAL WEATHER PROTECTION ■ EASY ACCESS & OPTION TO CHANGE FRONT LENS WINDOW

## TECH SPECIFICATIONS

<b>Model number</b>	H8S
<b>Weight (unpacked)</b>	0.6kg incl. Bracket (1.3lb)
<b>IP Rating</b>	IP 66
<b>Housing Enclosure</b>	Injection-molded ABS/Nylon
<b>Internal Heating/Cooling Element</b>	Not required
<b>Operation Temperature</b>	-20° C to +55° C
<b>Lens/Window</b>	Flame resistant VO-Margard
<b>Colours</b>	Black, RAL9002 (off-white)
<b>DIMENSIONS</b>	
<b>External (mm)</b>	180(L) x 85(W) x 85(H)
<b>Diameter of Front Lens</b>	50mm
<b>Useful Internal Dimensions (mm)</b>	100 (L) x 60(W) x 60(H)

Note: Max temperature -10°C. Special cabling should be used for operating temperature below -10°C.

## AVAILABLE ACCESSORIES

Camera Mounting Plate and Screws

2 x **PG9** Nylon cable glands for external connection cables

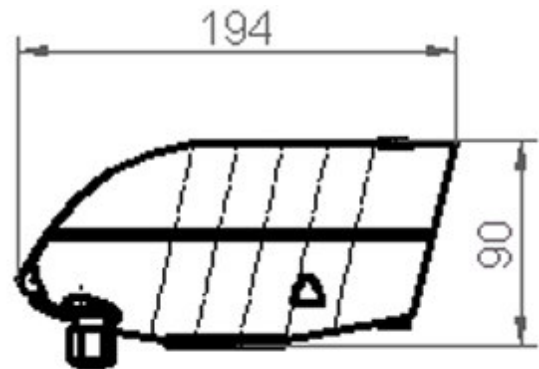
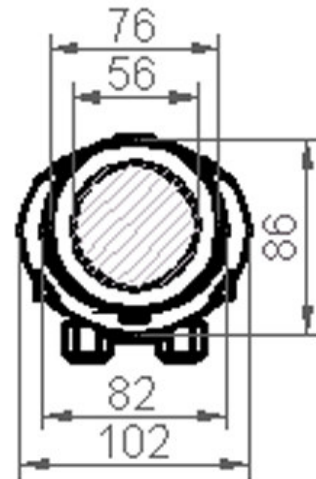
**B9** Nylon wall mounting bracket or

**AB** Aluminium wall mounting bracket

## CAMERA RECOMMENDATIONS

Small-medium sized CCD/C-MOS cameras. Quotations and recommendations available upon specific request. (refer to useful internal dimensions in Technical Specifications on this page)

## TECH DRAWINGS



All products have been produced using CE-certified material. We offers a 12-month guarantee exclusively or any defects arising from the manufacturing process and only for products manufactured by us. We are not liable for damages and defects arising from third party products or actions.

Your distributor is:

