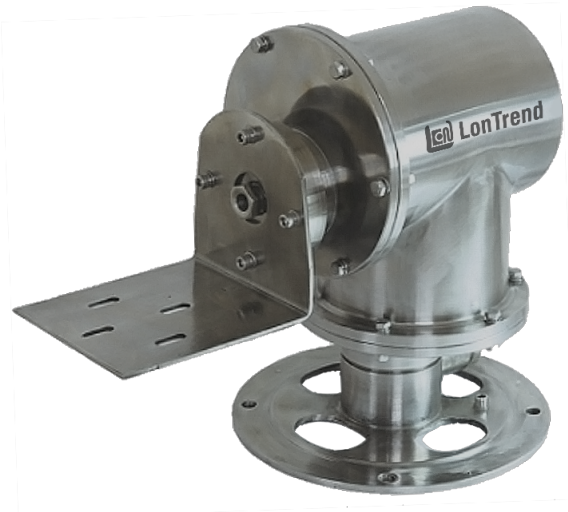


Tourelle antidéflagrante étanche en acier inox

LTPX01

Explosion Proof Pan and Tilt Unit for Loads up to **20 kg**



Features

- IP66, NEMA-4X enclosure rating
- Ex d IIC T6 Gb explosion-proof marking
- Maximum load 20 kg (44.1 lb)

Tech Specs

Model	LTPX01
Maximum Load	20 kg (44.1 lb)
Type	Indoor/Outdoor, side load
Protection Rating	<ul style="list-style-type: none"> ■ IP66, NEMA-4X enclosure rating ■ Ex d IIC T6 Gb explosion-proof marking
Material	SS304
Finish	Stainless steel original color
Input Power	220 V AC/24 V AC
Power	25 W
Consumption	
Pan Range (Movement in Horizontal Plane)	0° to 350°
Pan Speed	3.8° per second
Tilt Range (Movement in Vertical Plane)	-90° to 90°
Tilt Speed	3.8° per second
Accuracy	0.2°
Atmospheric Pressure	80 kPa to 106 kPa
Operating Ambient Temperature	-45 °C to 60 °C (113 °F to 140 °F)

Model	LTPX01
Relative Humidity	5 % to 95 % noncondensing
Communication	RS-485
Protocols	Pelco-D, Pelco-P
Communication Speed	2,400 bps, 4,800 bps, 9,600 bps, 19,200 bps adjustable
Dimensions (W × H × L)	300 mm × 280 mm × 380 mm (11.81 in × 11.02 in × 14.96 in)
Weight	21.4 kg (47.18 lb)
Note	-

*Design and specifications are subject to change without prior notice.