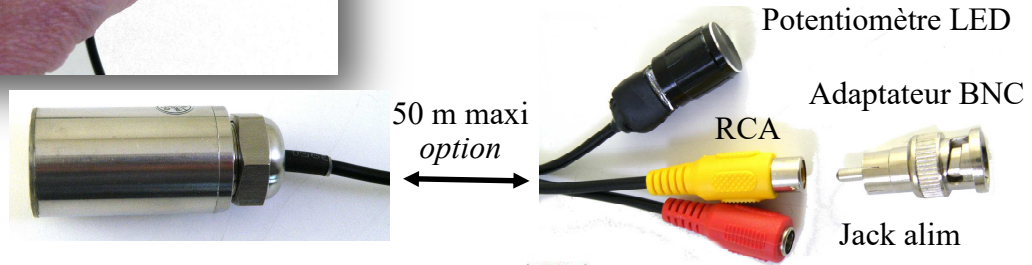


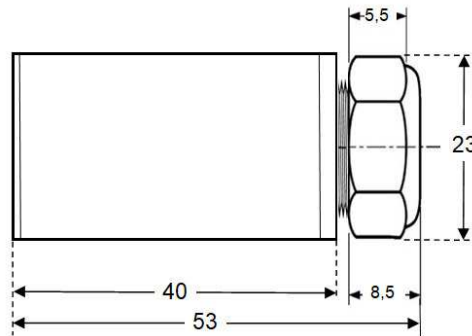
Caméra Inox étanche MC-P2302



- Caméra immersible à 50 m
- Boîtier Inox anti corrosion
- Projecteur LED annulaire réglable
- Cordon standard : 1 m & 20 m
- Vidéo coaxiale Full HD (AHD)



Dimensions



Caractéristiques

Image Sensor	2MP SONY Image Sensor	
Signal System	Europe	
Effective Pixels	1920(H)*1080(V)	
Camera house	316 stainless steel, Anti-corrosion	
Min. Illumination	0.0001Lux @ F1.2	
Shutter Time	1/25(1/30) s to 1/50,000 s	
View angle	2.8mm FOV (Diagonal) :140 degree	
LED	12 bright ajustable LEDS	
Video Frame Rate	1080p@25fps	
HD Video Output	AHD	
CVBS Video Output	AHD Composite Output (75Ω/BNC)	
Working depth	Max 50M under water	
S/N Ratio	65dB	
Gain Control	Auto	
White Balance	Auto	
Day/Night Mode	Auto	
Operating Conditions	-20 °C - 60 °C	
Power Supply	DC5-12V	
Power Consumption	1W MAX	
Waterproof rate	IP68	
Dimension	D: 23 mm x 53mm	
Weight	190g	