



Submersible 5MP IP SS(Stainless Steel) bullet camera

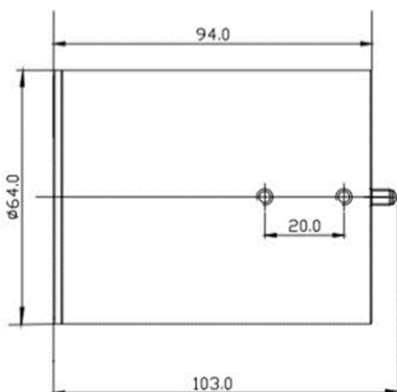
VSM-5MP



FEATURES

- 1/2.8" Sony 5.69MP STARVIS image sensor
- 2560 x 1920 resolution
- 30fps/all resolution
- Triple streaming (H.265, H.264, MJPEG)
- 2.8mm fixed lens
- White LEDs (On/Off at web) , IR LEDs (option)
- Real-WDR (Wide Dynamic Range)
- 3D DNR (Digital Noise Reduction)
- Stainless Steel Body (AISI 316L grade)
- Waterproof / IP 68 compliant
- Submersible (Max 50m deep/20m for 24hours)
- 50m cable included (20m option)
- ONVIF Ver17.06 Compliant
- PoE (IEEE802.3af)

DIMENSION



Connecteur étanche

SPECIFICATIONS

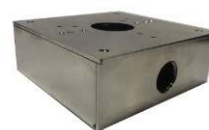
Image Sensor	1/2.8" Sony 5.69MP STARVIS image sensor
Scan System	Progressive Scan
Total Pixels	2704(H) x 2104(V), 5.69 Mega Pixels
Effective Pixels	2616(H) x 1964(V), 5.14 Mega Pixels
Day & Night	Auto / Day(Color) / Night(BW), ICR Control
Privacy Area	On / Off (16 Programmable Zones)
Motion Detection	432 Zone, Sensitivity 1 ~ 5 Step, On / Off
Real WDR	120dB
DNR	2DNR, 3DNR
Video Compression	H.265/H.264/MJPEG
Resolution	2560x1920 / 2560x1440 / 2048x1536 / 1600x1200 / 1920x1080 / 1280x1024 / 1280x960 / 640x480 / 640x360 / 320x240 / 320x180
Max. Frame Rate	Max 30fps@ all resolution
Video Quality	H.265 : Bitrate Control H.264 : Bitrate Control MJPEG : Quality Level Control
Video Streaming	Triple Stream (RTP/RTSP , Unicast RTP , Multicast RTP)
LAN Interface	RJ45 10/100-base-T Ethernet auto sensing PoE(IEEE 802.3af) Interface
Protocol	TCP/IP,UDP/IP,RTP,RTSP,RTCP,NTP, HTTP,DHCP,FTP,SMTP,DNS,DDNS
ONVIF	ONVIF Ver17.06
Power Supply	PoE, DC12[V] ± 10%
Operating Temp	0°C ~ +50°C
Humidity	0% ~ 90%
Lens	2.8mm fixed lens
Dimension/mm	Ø64 x 103(L)
Weight/g	Approx. 920

Specification & Design are subject to change without prior notice

OPTION / Accessories



extension cable(50 or 20M)



Junction box AISI 316L



wall mount bracket AISI-316L